

TAXING UNIT: 25

N.E. 1/4 OF S.E. 1/4
SECTION 17, T.6N., R.1W., S.L.B. & M.
IN OGDEN CITY SCALE 1" = 100'

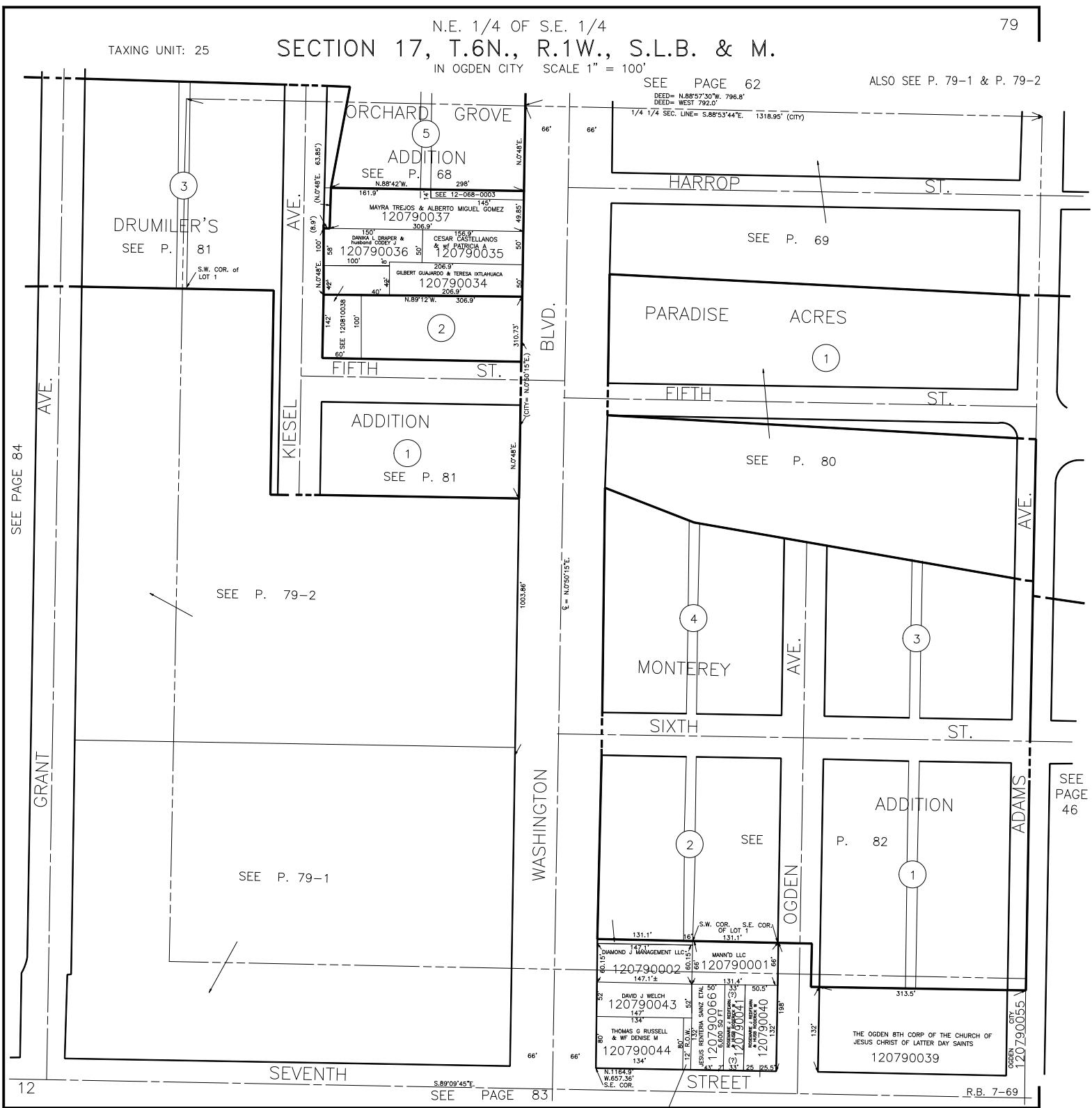
79

SEE PAGE 62

ALSO SEE P. 79-1 & P. 79-2

DEED= N.88°57'30"W. 796.8'
DEED= WEST 792.0'

1/4 1/4 SEC. LINE= S.88°53'44"E. 1318.95' (CITY)



SEE PAGE 84

GRANT AVE.

12

SEVENTH

SEE PAGE 83

KIESEL AVE.

DRUMILER'S
SEE P. 81

ADDITION
SEE P. 81

FIFTH ST.

WASHINGTON BLVD.

BLVD.

ORCHARD GROVE

ADDITION
SEE P. 68

120790036
120790035
120790034

HARROP ST.

SEE P. 69

PARADISE ACRES

FIFTH ST.

SEE P. 80

MONTEREY

SIXTH ST.

AVE.

OGDREN ST.

ADDITION
P. 82

ADAMS AVE.

THE OGDEN 8TH CORP. OF THE CHURCH OF
JESUS CHRIST OF LATTER DAY SAINTS
120790039

SEE PAGE 46

R.B. 7-69

(JESUS RENTERIA SAINZ ETAL)
120790042
1040 SQ FT